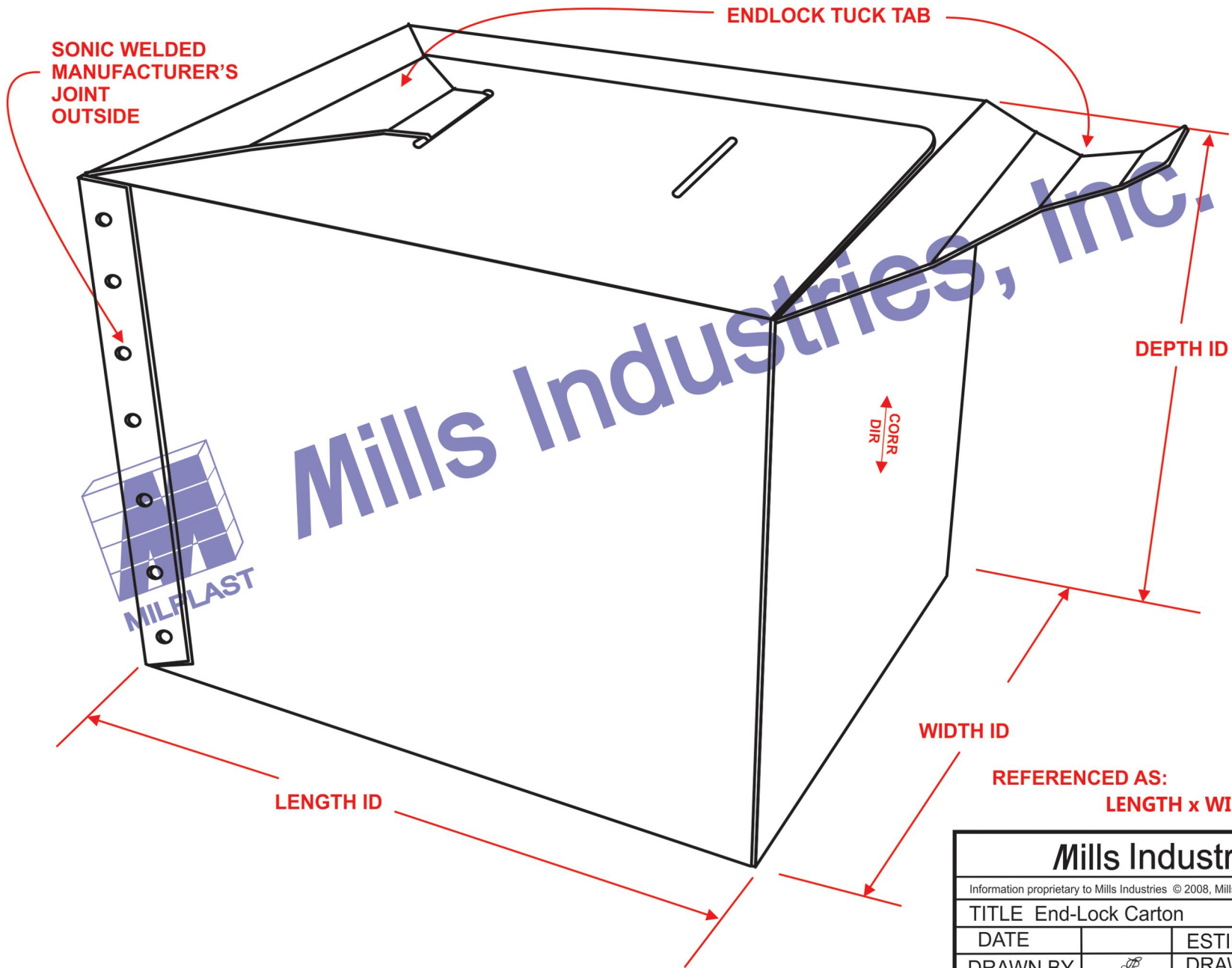


END-LOCK CARTON

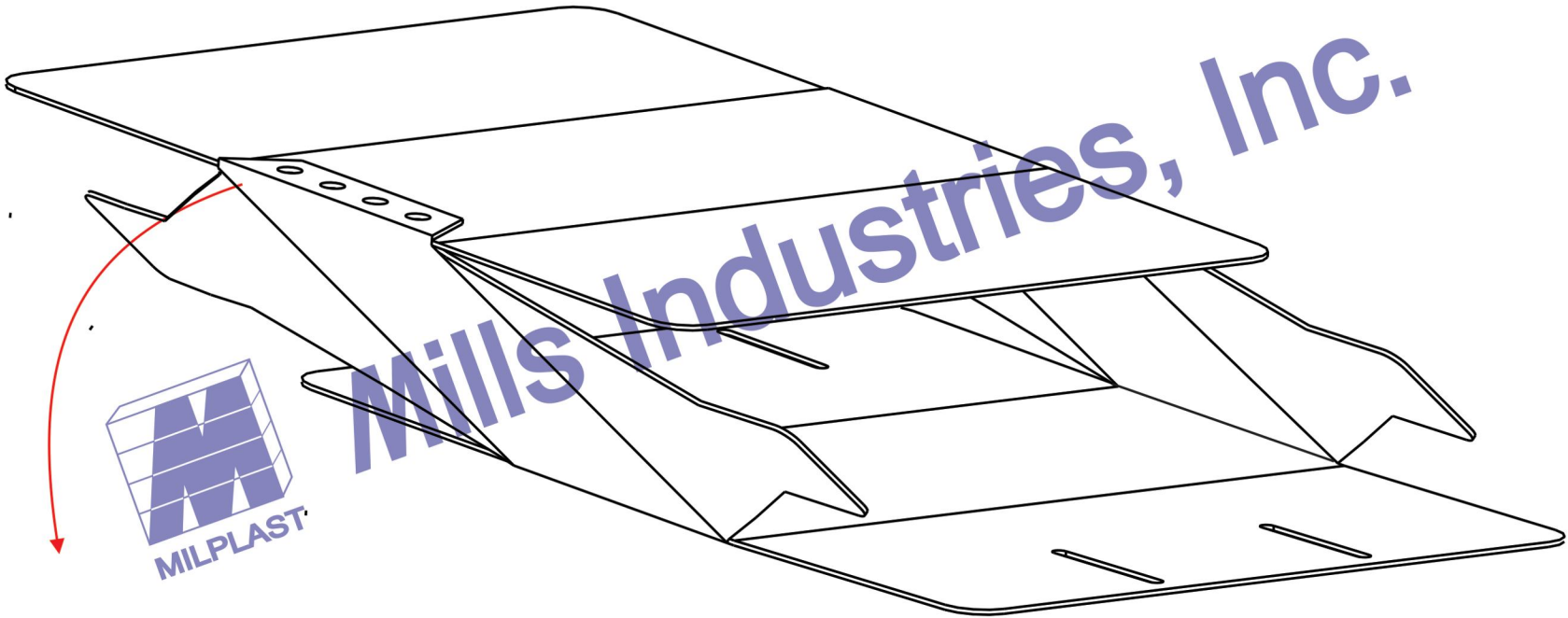


REFERENCED AS:
LENGTH x WIDTH x DEPTH

Mills Industries, Inc.		
Information proprietary to Mills Industries © 2008, Mills Industries, Inc.; All rights reserved		
TITLE End-Lock Carton		
DATE		ESTIMATE #
DRAWN BY	<i>RL</i>	DRAWING # ELC0901a
APPROV. BY		SCALE NA

Mills Industries Proprietary. The information contained herein is confidential and proprietary to Mills Industries, Inc. and shall not be reproduced in whole or part or used for any design or manufacture except when such user possesses direct, written authorization from Mills Industries, Inc.

END-LOCK CARTON



Collapsible Position

Mills Industries, Inc.		
<small>Information proprietary to Mills Industries © 2008, Mills Industries, Inc.; All rights reserved</small>		
TITLE End-Lock Carton		
DATE		ESTIMATE #
DRAWN BY	<i>RL</i>	DRAWING # ELC0901c
APPROV. BY		SCALE NA
<small>Mills Industries Proprietary. The information contained herein is confidential and proprietary to Mills Industries, Inc. and shall not be reproduced in whole or part or used for any design or manufacture except when such user possesses direct, written authorization from Mills Industries, Inc.</small>		